

# Osterturnier\_2023



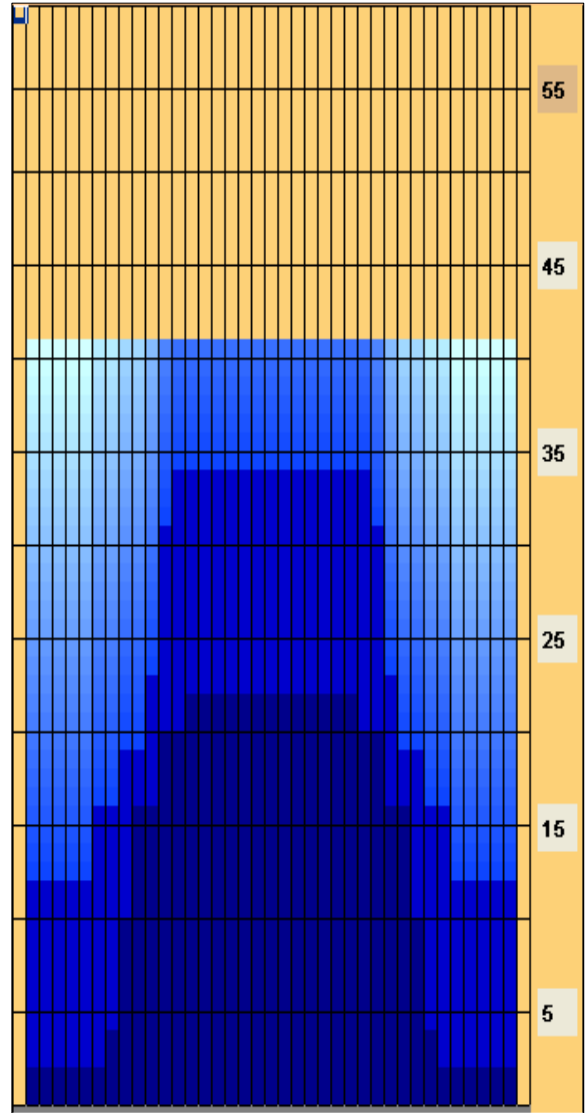
**Oil Pattern Distance:** 41 Feet      **Reverse Brush Drop:** 41      **Oil Per Board:** 40 uL  
**Forward Oil Total:** 12.6 mL      **Reverse Oil Total:** 12.6 mL      **Volume Oil Total:** 25.2 mL  
**Forward Boards Crossed:** 315 Boards      **Reverse Boards Crossed:** 315 Boards      **Total Boards Crossed:** 630 Boards

	Start	Stop	Loads	Speed	Crossed	Start	End	Feet	T.Oil
1	2L	2R	3	10	111	0.0	2.8	2.8	4440
2	8L	8R	1	14	25	2.8	4.7	1.9	1000
3	9L	9R	3	14	69	4.7	10.6	5.9	2760
4	10L	10R	3	14	63	10.6	16.5	5.9	2520
5	12L	12R	2	14	34	16.5	20.4	3.9	1360
6	14L	14R	1	18	13	20.4	22.9	2.5	520
7	2L	2R	0	18	0	22.9	41.0	18.1	0

	Start	Stop	Loads	Speed	Crossed	Start	End	Feet	T.Oil
1	2L	2R	0	30	0	41.0	34.0	-7.0	0
2	13L	13R	1	22	15	34.0	30.9	-3.1	600
3	12L	12R	3	18	51	30.9	23.3	-7.6	2040
4	11L	11R	2	14	38	23.3	19.4	-3.9	1520
5	9L	9R	2	14	46	19.4	15.5	-3.9	1840
6	7L	7R	2	14	54	15.5	11.6	-3.9	2160
7	2L	2R	3	10	111	11.6	7.4	-4.2	4440
8	2L	2R	0	10	0	7.4	0.0	-7.4	0

Conditioner:  
 Type In or Select  
 One  
 TransferType:  
 Type In or Select  
 One

- Forward
- Reverse
- Combined
- Buff



Item	3L-7L:18L-18R	8L-12L:18L-18R	13L-17L:18L-18R	18L-18R:17R-13R	18L-18R:12R-8R	18L-18R:7R-3R
Description	Outside Track:Middle	Middle Track:Middle	Inside Track:Middle	Middle: Inside Track	Middle:Middle Track	Middle:Outside Track
Track Zone Ratio	4.06	1.57	1.01	1.01	1.57	4.06

