

# Osterturnier\_2019\_LB



**Oil Pattern Distance:** 40 Feet      **Reverse Brush Drop:** 40      **Oil Per Board:** 40 uL  
**Forward Oil Total:** 11.48 mL      **Reverse Oil Total:** 12.4 mL      **Volume Oil Total:** 23.88 mL  
**Forward Boards Crossed:** 287 Boards      **Reverse Boards Crossed:** 310 Boards      **Total Boards Crossed:** 597 Boards

	Start	Stop	Loads	Speed	Crossed	Start	End	Feet	T.Oil
1	2L	2R	2	10	74	0.0	1.4	1.4	2960
2	7L	7R	2	10	54	1.4	4.2	2.8	2160
3	9L	9R	2	10	46	4.2	7.0	2.8	1840
4	11L	11R	3	14	57	7.0	12.9	5.9	2280
5	13L	13R	3	18	45	12.9	20.5	7.6	1800
6	15L	15R	1	18	11	20.5	23.0	2.5	440
7	2L	2R	0	22	0	23.0	40.0	17.0	0

Forward Reverse More

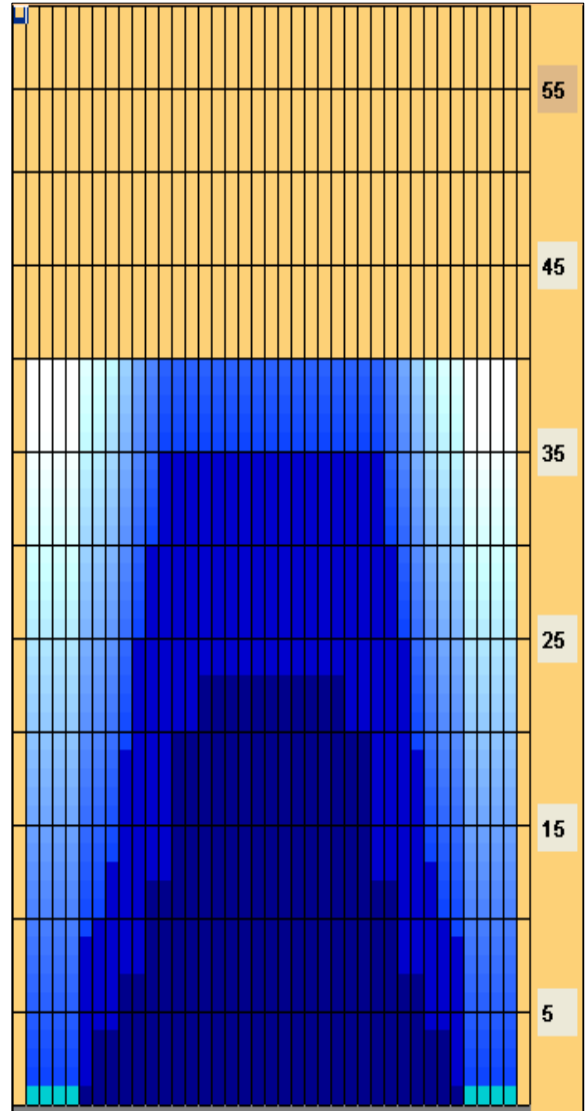
	Start	Stop	Loads	Speed	Crossed	Start	End	Feet	T.Oil
1	2L	2R	0	30	0	40.0	35.0	-5.0	0
2	12L	12R	2	18	34	35.0	29.9	-5.1	1360
3	11L	11R	2	18	38	29.9	24.8	-5.1	1520
4	10L	10R	3	14	63	24.8	18.9	-5.9	2520
5	9L	9R	3	14	69	18.9	13.0	-5.9	2760
6	8L	8R	2	10	50	13.0	10.2	-2.8	2000
7	7L	7R	1	10	27	10.2	8.8	-1.4	1080
8	6L	6R	1	10	29	8.8	7.4	-1.4	1160
9	2L	2R	0	14	0	7.4	0.0	-7.4	0

Forward Reverse More

Conditioner:  
Type In or Select One

TransferType:  
Type In or Select One

- Forward
- Reverse
- Combined
- Buff



Item	3L-7L:18L-18R	8L-12L:18L-18R	13L-17L:18L-18R	18L-18R:17R-13R	18L-18R:12R-8R	18L-18R:7R-3R
Description	Outside Track:Middle	Middle Track:Middle	Inside Track:Middle	Middle: Inside Track	Middle:Middle Track	Middle:Outside Track
Track Zone Ratio	9	1.67	1.02	1.02	1.67	9

